

HUNGER RELIEF FEDERATION OF WISCONSIN ANNUAL SUMMIT



Welcome and Introduction



Matt King

Chief Executive Officer
Hunger Task Force



Presentation from the Hunger Relief Federation



Mark Lisowski

Hunger Relief Federation Organizer
Hunger Task Force



Membership Update

- **177 members**; primarily in rural and remote spaces
- Located in **69 of 72 counties** across Wisconsin
- Nearly 60 organizations and 100 individuals attending this Summit



Recap of Outreach Accomplished

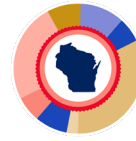
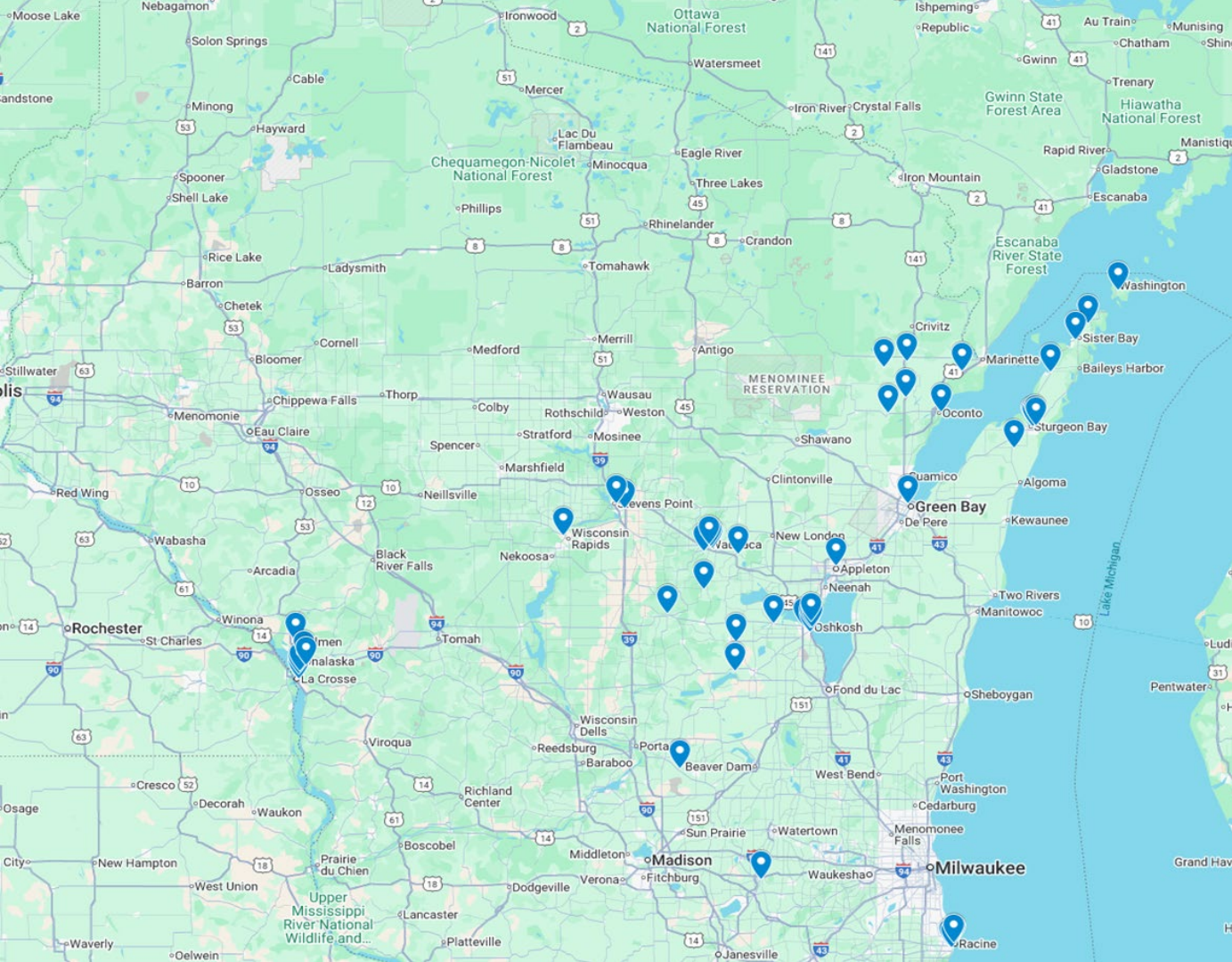
- 58 site visits conducted since October 2024
- 18 Counties visited within last year
 - Door, Kewaunee, Marinette, Oconto, Jefferson, La Crosse, Waukesha, Outagamie, Brown, Fond du Lac, Racine, Winnebago, Waupaca, Portage, Wood, Waushara, Green Lake, Columbia
- 11 new members recruited from outreach conducted
- Takeaways: stronger, more informed advocate base; greater understanding of network needs and opportunities to support



Accomplishments



- Membership Expansion
- Reach & Resiliency infrastructure and equipment grants
- Education on nutrition policy
- Mobilization on advocacy campaigns

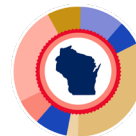


**HUNGER RELIEF
FEDERATION
OF WISCONSIN
ANNUAL SUMMIT**

Membership Expansion & Outreach

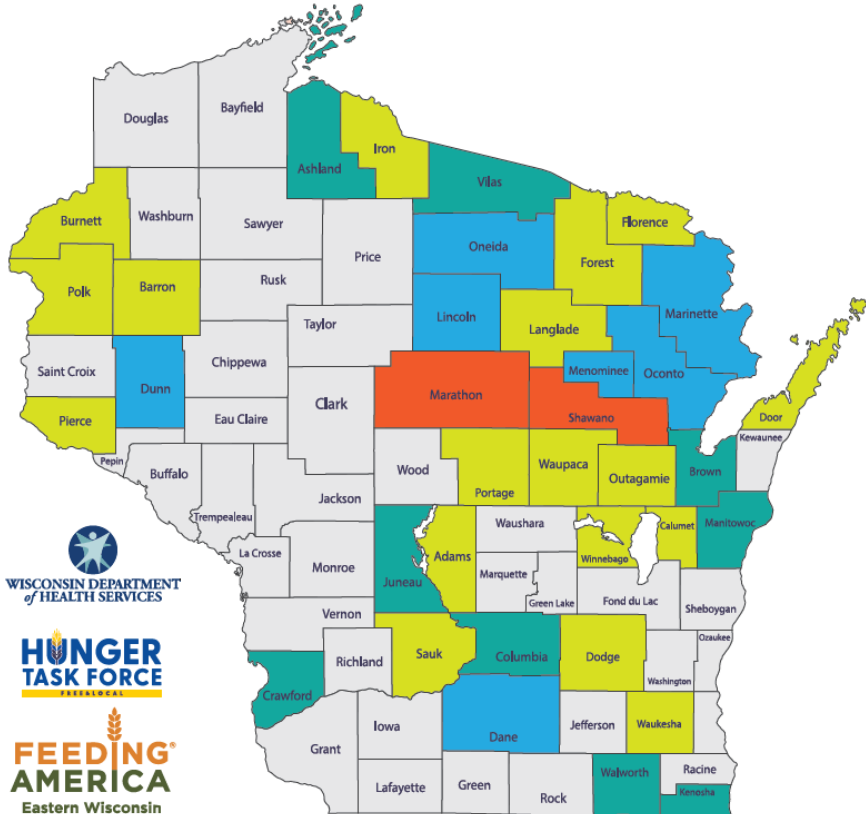
Reach & Resiliency

- Over \$500,000 worth of equipment distributed
- More than 30 pantries in 27 Counties benefitted
- 6 new TEFAP providers across Wisconsin
- Multi-year effort (2022-2025)



**HUNGER RELIEF
FEDERATION
OF WISCONSIN
ANNUAL SUMMIT**

Reach & Resiliency Investments



\$0 - \$5,000

\$5,001 - \$10,000

\$10,001 - \$50,000

\$50,000+

This map details levels of infrastructure and capacity-building investments made through Round 2 of the Wisconsin Department of Health Services' Reach & Resiliency grant program. Investments include freezers, coolers, shelving and carts to expand capacity at local providers of The Emergency Food Assistance Program.

Advocacy Wins

- \$10,000,000 investment in food purchasing through the food security initiative
- Federation member engagement
 - JFC hearings
 - Voices Against Hunger
- Direct lobbying efforts in Madison and Washington DC

Legislative Outreach & Campaign Organizing



- Targeted, district-level outreach to pantries and other stakeholders
- Focus on legislative priorities, both federal and state
- Education and mobilization of the Hunger Relief Federation



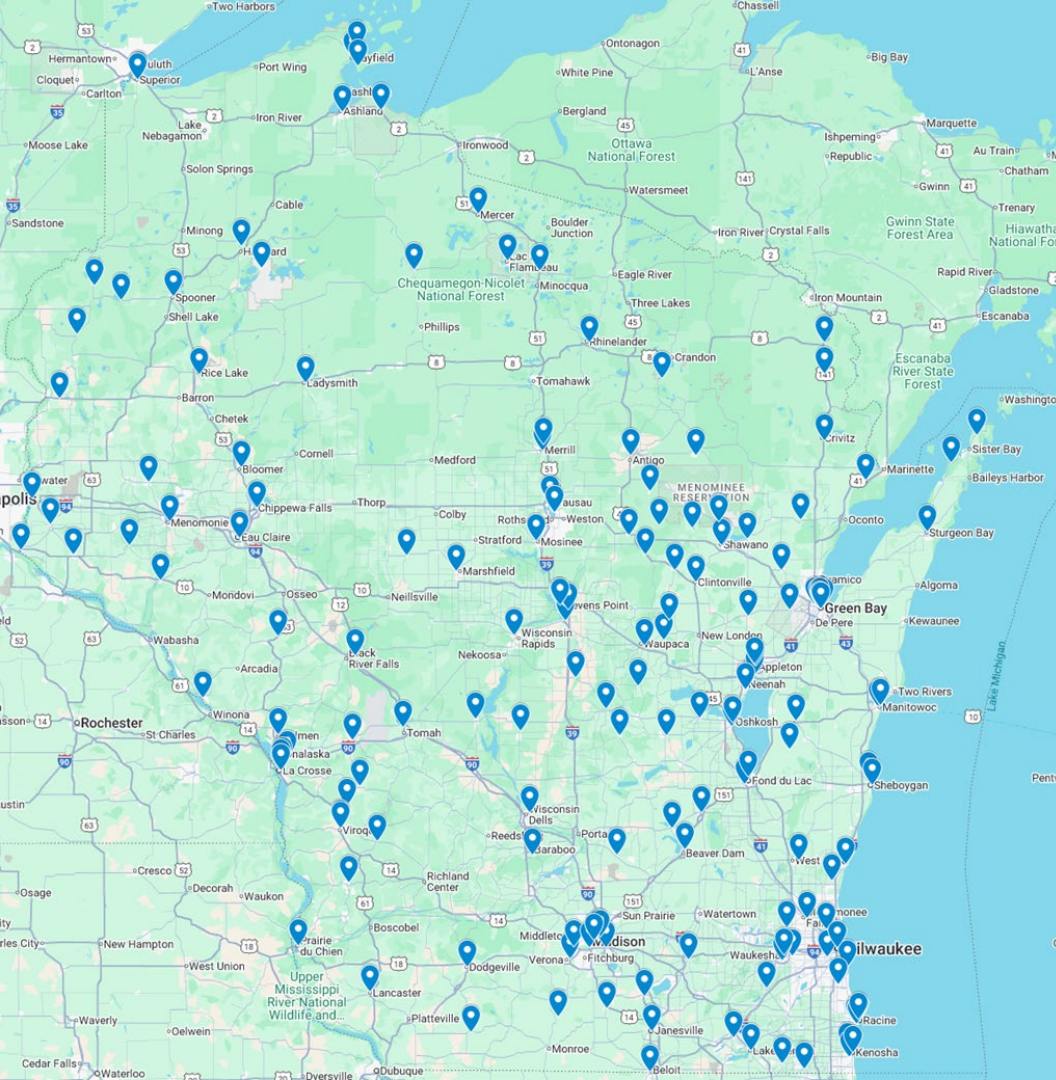
Tech Assistance & Capacity Building



- Continued support with Federal Nutrition Programming expansion and education
- Advancement of pantry best practices
- Identify grants and support membership with applications
- Infusion of equipment and infrastructure

Membership Expansion

- Reach all 72 Counties
- Targeted expansion in key legislative districts
- Support in education of and mobilization around advocacy campaigns



State and Federal Nutrition Policy Updates



Dr. Reno Wright

Public Policy & Advocacy Director
Hunger Task Force



Increase Funding

Food Security Grant

Food Transportation & Distribution Grants

Tribal Elder Box Funding

Summer Electronic Benefit Transfer
(EBT) Funding

Policy Updates

Counties can appropriate money to non-
profits

Free School Meals

Act 201 of 2024 – Healthy Food
Incentives Program

Senior Farmer's Market Nutrition Program
Expansion

Innovation

EBT processing equipment for Farmer's
Markets

State-based LFPA Program

Farm to School

State-level Goals

HUNGER TASK FORCE Feeding People Today Ending Future Hunger

2025 - 2027 WISCONSIN STATE LEGISLATIVE PRIORITIES

This year leaders in Wisconsin will pass its biennial budget to fund programs and policies for the next two years. This budget bill will authorize and fund various programs that affect all 17 counties across our state – rural, remote and urban. With a rich and proud history of farming to bring one of our nation's largest agricultural producers, Wisconsinans deserve to see programs that not only have a profound positive impact on our local economies but also help ensure that no individual, family or children are ever without nutritious food.

PRIORITIES

As a leading anti-hunger public policy organization, Hunger Task Force asks members of the Wisconsin State Legislature and the Wisconsin Governor to incorporate strong anti-hunger policies in both the 2025 Wisconsin State Budget and over throughout the legislative session. Hunger Task Force supports the following 2025 priorities:

2025 - 2027 FEDERAL LEGISLATIVE PRIORITIES

This legislative session, leaders in Washington will determine the future of federal nutrition programs for years to come. Hunger Task Force believes that all communities – rural, remote and urban – should see investments made to protect our nation's most vulnerable. Americans deserve to see programs that not only have a profound positive impact on our national economy but also help ensure that no individual, family or children are ever without nutritious food.

As a leading anti-hunger and public policy organization, Hunger Task Force asks members of Congress to support strong anti-hunger and agricultural policies. Hunger Task Force supports the following federal legislative priorities: • Strengthen the **Supplemental Nutrition Assistance Program (SNAP)** and the **Commodity Supplemental Food Program (CSFP)**, invest in the **Emergency Food Assistance Program (TEFAP)** and protect and expand child nutrition programs.

STRENGTHEN THE SUPPLEMENTAL NUTRITION ASSISTANCE PROGRAM (SNAP)

FUND THE COMMODITY SUPPLEMENTAL FOOD PROGRAM (CSFP)

INVEST IN THE EMERGENCY FOOD ASSISTANCE PROGRAM (TEFAP)

PROTECT AND EXPAND CHILD NUTRITION PROGRAMS

INVEST IN RURAL, REMOTE AND URBAN COMMUNITIES

IN YOUR FOLDERS!

01

Food Security Grant (\$30M)

02

Tribal Elder Box (\$4M)

03

Food Distribution Grants (\$2M)



Federal-level Goals



Strengthen the
Supplemental
Nutrition Assistance
Program (SNAP)



Fund the
Commodity
Supplemental Food
Program (CSFP)



Invest in
The Emergency
Food Assistance
Program (TEFAP)



Protect and
Expand
Child Nutrition
Programs

In
your
folder
s!



Farm Bill Priorities

Pass a Farm Bill that reauthorizes funding for federal nutrition programs such as SNAP/FoodShare, TEFAP, CSFP and other programs.



State Policy Updates

Dec. 2023 – Legislative maps violate the state constitution

Feb. 2024 – Court selects new, more competitive maps

Mar. 2024 – New maps signed into law for 2024 election

Nov. 2024 – General Election results = more balanced representation

Assembly		
64 Republican Representatives	➔	54 Republican Representatives
35 Democrat Representatives	➔	45 Democrat Representatives

Senate		
22 Republican Representatives	➔	18 Republican Representatives
11 Democrat Representatives	➔	15 Democrat Representatives

State Policy Updates Cont.

Nov. 2024 – Private Governor’s Budget Listening Session

Dec. 2024 – Public Governor’s Budget Listening Sessions

March 2025 – Private Meetings with Legislators on the Joint Committee on Finance (JFC)

- **Michael Egly** - The Food Pantry Serving Waukesha (Sen. Julian Bradley)
- **Barbara Mendoza** - Flo-ing with Kindness & **Donald Hille** - Kingdom Come Food Pantry (Sen. Eric Wimberger)
- Met with Sen. Patrick Testin, Rep. Karen Hurd, Rep. Tony Kurtz & left materials with others
- Letters of support from:



- ❖ Chee’s Fresh Produce
- ❖ Yeng Farm
- ❖ Lee Farm

HUNGER TASK FORCE

FREE & LOCAL

State Policy Updates Cont.

April 2025 – Public Listening Sessions, partnered with Feeding Wisconsin

- **HRF Members participated across the state**

March – April 2025 – Legislation introduces SB154 & AB180 to prohibit the purchase of candy or soft drinks with FoodShare benefits.

May 2025 – Public Hearing held, still pending

June 2025, Governor's Office & JFC agree to fund:

- Food Security Grant Program (\$10M)
- Tribal Elder Box Program (\$3M)

Your hard work PAID OFF.

Thank you! Thank you! Thank you!



Federal Advocacy Snapshot

Oct. 2024 – Continuing Resolution Extends Farm Bill through Sep. 2025

Dec. 2024 – USDA announced \$500 million in Commodity Credit Corporation funding for FY25 TEFAP programs

Mar. 2025 – USDA cut TEFAP food deliveries in half between May and September

Mar. 2025 – USDA canceled \$500 million nationwide in CCC funding for TEFAP

- \$2.2 million/1.1 million pounds in food lost for Wisconsin

April 2025 – FRAC Anti-Hunger Policy Conference

- Meetings with Legislators to protect SNAP, TEFAP, CSFP and Child Nutrition Programs



H.R. 1 – OBBBA & SNAP – House Version

May 2025 – House Budget Reconciliation Proposal

\$300 Billion in cuts to SNAP (over 10 years)	
Yes	No
215 Republicans	212 Democrats + 2 Republicans
1 Republican Present, 2 Republicans not voting	
215	214
PASSED	

May 2025 – The bill moves forward to the Senate

H.R. 1 – OBBBA & SNAP – Senate Version


June 2025 – Senate proposed edited version of OBBBA


\$187 Billion in cuts to SNAP (over 10 years)	
Yes	No
50 Republicans	47 Democrats + 3 Republicans
50	50
+1 Vice President Tie-breaker	
PASSED	

July 2025 – OBBBA signed into Law

H.R. 1 – OBBBA & SNAP – Cost Sharing

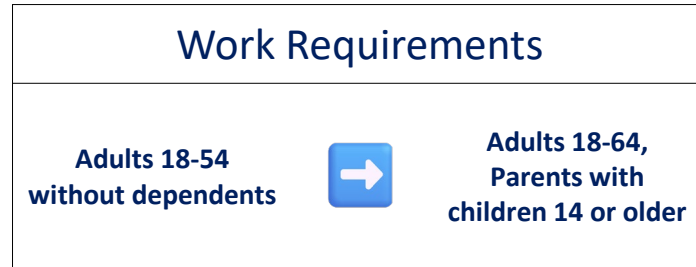
Increase in Cost Sharing between State and Federal Government

Cost to Administer SNAP		
50% Match		75%

State's cost for allotments		
0%		Up to 15%

Wins – Change from 5% to 25% & No Zero Tolerance Measure

Expanded Work Requirements & Stricter Rules & Restrictions



Wins – Change from House Proposed, children 7 and older



H.R. 1 – OBBBA & SNAP – Other

Thrifty Food Plan

Frozen outside of inflation

Utility Allowance

**Now limited to only those ages 60+ or
households with disabled members**

SNAP-Ed

Funding Eliminated

H.R. 1 – OBBBA & SNAP – DHS Increase Request

\$32.4 Million

To pay increased costs in the administration of the FoodShare program

\$20.7 Million

To pay for increased FoodShare Employment & Training (FSET) Participation

\$16.1 Million

To hire additional FoodShare Quality Control (QC) staff to maintain <6% error rat

Total DHS Request: \$69.2 Million

 **HUNGER TASK FORCE**

FREE & LOCAL

Food Procurement at the Grassroots Level



Paulina Baker
Farm to Families Coordinator
REAP Food Group



Ryan Sullivan
Co-Founder
Sullivan Family Farms



Kyle Buehner
Food Procurement Manager
Hunger Task Force

Member Highlight: *Brown County Hunger Coalition*



Selena Darrow
Founder and Executive Director
Rooted In, Inc.



Larry Peterson
Food Pantry Manager
Resurrection Lutheran Food Pantry

BROWN COUNTY HUNGER COALITION

HOW DID WE GET HERE



Presenters:

**Larry Peterson, Co-Facilitator Brown County Hunger Coalition
and Food Pantry Manager, Resurrection Lutheran Food Pantry**

**Selena Darrow, Co-Facilitator Brown County Hunger Coalition,
and Founder and Executive Director Rooted In Inc.**

HISTORY



- Founded in 1984 as the Brown County Task Force on Hunger and renamed the Brown County Food and Hunger Network in 2011, operated as a 501(c)(3) focused on hunger prevention.
- After leadership changes and pandemic-related challenges, the organization could no longer meet the legal requirements of a nonprofit corporation.
- The members voted in May 2024 to dissolve and transition into a service-focused coalition, The Brown County Hunger Coalition.
- 2025-Membership dues, member application and subcommittees now lead the coalition's work in strategy, communications, education, and food distribution/acquisition.

MISSION

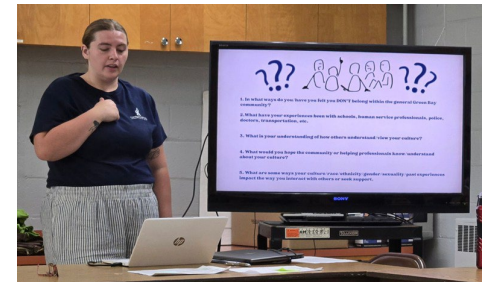
To combat food insecurity and hunger in our community by educating, empowering and fostering collaboration for the benefit of the member organizations.



PLATFORM

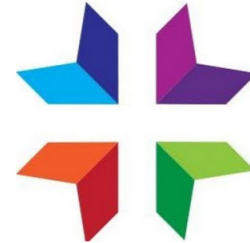


- The Brown County Hunger Coalition is a network of 19 local pantries and agencies, modeled after the Hunger Relief Federation.
- Work together to share best practices, cooperate, provide resources, educate, build capacity, and advocate for policies that fight hunger that develop community-driven solutions to improve long-term food security for all of us.



RESURRECTION LUTHERAN FOOD PANTRY

- Founded in 1983 as a distribution point for government commodities
- Originally funded entirely by Resurrection Lutheran Church
- Larry took over management in 2014.
 - Facing declining parishioners and financial support. Verge of closing
 - Built relationships with 2 other churches in Green Bay that support financially
 - Built relationships with community businesses to rebuild facility
 - Started talking to EVERYONE about the food pantry and its mission
 - They want to help because he shares stories of impact
 - “This pantry is being watched over. What I need shows up when its supposed to”.
- Since 2022, pantry usage has doubled. Serving 300 families per month- over 1000 individuals (once per month, about 30 lbs per person)
- Why in the coalition?
 - Relationships with other pantries and share food



ROOTED IN INC



- Founded in 2023
- **Our mission**
 - We build a “community table” where *all* people are nourished and uplifted. By bringing people together, we improve access to fresh and nutritious foods as a tool for transforming health and wellbeing.
- **Programs**
 - **The Glean Team**
 - Recover surplus food that otherwise would go to waste. Donated to the charitable food system to feed our community.
 - **Nourishment for All**
 - Cooking for the Community- Individually packaged homemade nutritious meals donated to food pantry partners.
 - The Nourished Table- Weekly pop up choice based nutritious food pantry, including food, supplies and resources for our unhoused population.
 - **Chef's Table**
 - Inspire and teach the community to cook nutritious meals at home using local farmers’ market and Wisconsin artisan ingredients.
 - Local recipe database
- Why in the coalition? Inspire advocacy, education, best practices, mutual benefit, capacity building

CONTACT US

Selena Darrow

Founder and Executive Director

Rooted In Inc.

selena@rootedininc.org

920-676-7506

Website



Larry Peterson

Food Pantry Manager

Resurrection Lutheran Church

lightboy216@gmail.com

920-544-2347

Website



Childhood Nutrition Programming and How You Can Be Involved



Amber Daug
CEO & Founder
Grow It Forward, Inc.



Tania Ramsey
Child Nutrition Organizer
Hunger Task Force



Childhood Nutrition

Child Nutrition Organizer

Tania Ramsey

 **HUNGER TASK FORCE**



What is the Summer Food Service Program (SFSP)?

The **Summer Food Service Program (SFSP)** is a federally funded, state-administered program in the United States that ensures **children and teens (ages 18 and under)** continue to receive **nutritious meals** when school is not in session—especially during **summer vacation**.

It was created to **bridge the gap** during the summer months when children lose access to the free or reduced-price meals they normally get at school.

Summer Food Service Program (SFSP)

✓ Key Points:

- **Funded by:** U.S. Department of Agriculture (USDA)
- **Administered by:** State agencies (DPI)
- **Meals are Free:** No application or registration is usually required
- **Open Sites:** Available in low-income areas, open to all children
- **Closed-Enrolled Sites:** Serve a specific group of children, such as at camps or programs

Program Goals:

- **Fight food insecurity** when school is out
- **Promote health and nutrition** for low-income children
- **Support families** who rely on school meals during the academic year

Types of SFSP Sites: Congregate vs. Non-Congregate

On-site = "Congregate"

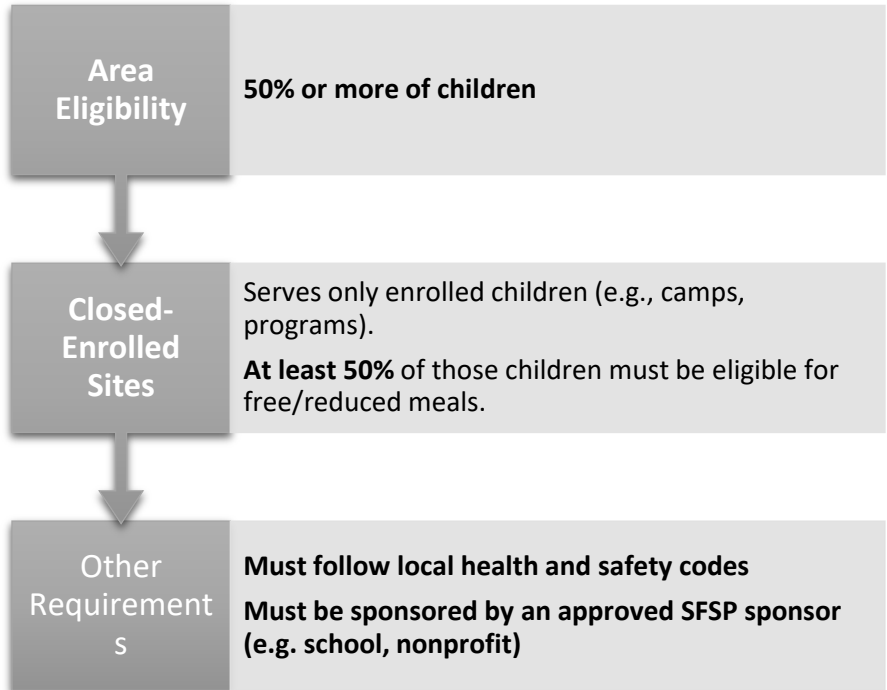
Off-site/take home = "Non-congregate"

Why This Matters:

- **Congregate sites** foster community and offer more structure.
- **Non-congregate sites** provide flexibility and reach more kids in remote or underserved areas.

Who Can Qualify as a Site?

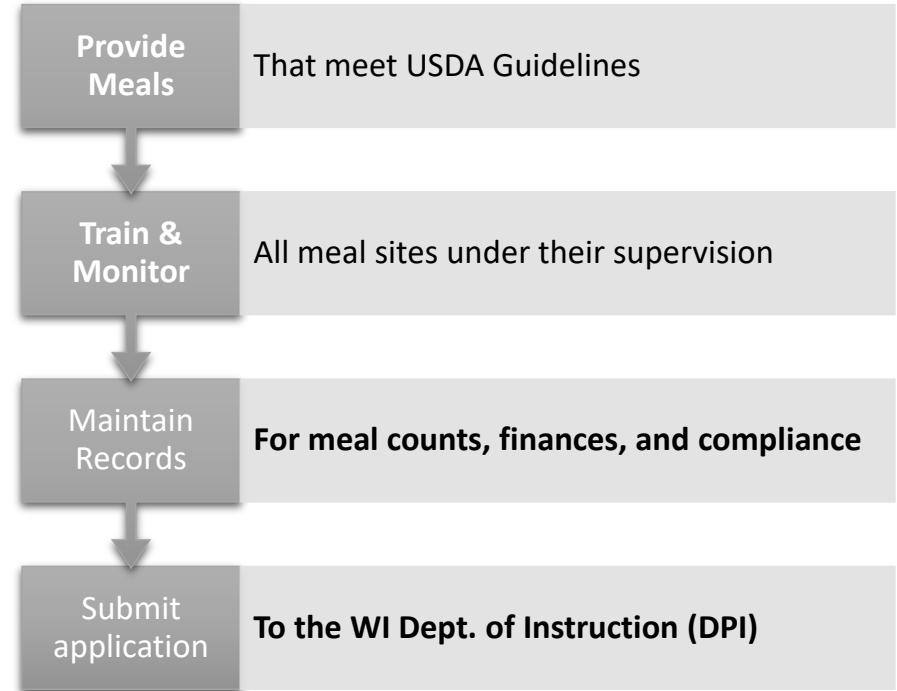
✓ To operate as an SFSP **meal site** in Wisconsin, the location must meet **one or more** of the following criteria:



Who Can Qualify as a Sponsor?

✔ To become a sponsor, an organization must be **capable of managing a food service program** and meeting federal/state regulations.

- 👤 **Private Nonprofit Organizations (501c3)**
Food banks, community orgs, YMCAs
- 👤 **Residential Camps**
Youth summer camps
- 👤 **Tribal Governments**
Tribal organizations and services





NO KID HUNGRY

- No Kid Hungry is a national campaign run by Share Our Strength, a nonprofit working to solve problems of hunger and poverty in the United States and around the world.
- One of the largest national partners that Hunger Task Force teams with, No Kid Hungry provides grant funding for in-house summer meals staff and advocates for off-site ("non-congregate") service.

West De Pere
Adams Area
Grow It Forward



 **HUNGER TASK FORCE**



“

Not taking NO for an answer!
- Amber Daugs

”

DIGNITY • JUSTICE • EQUITY • COMPASSION • STEWARDSHIP

HUNGER DOESN'T TAKE SUMMER BREAK:

Saying YES to SFSP!!!



Grow It Forward | Hunger Task Force
Summer 2025 | Amber Daugs, CEO

THE SUMMER HUNGER GAP

April 2025 MPSD Announcement

Email submitted from food service provider reducing summer meals to 3 weeks of summer school only, citing \$32,000 deficit.

Community Impact

No congregate meals for Boys & Girls Club, YMCA, and Southfield Learning Center for 9+weeks. Elimination of non-congregate meals in Manitowoc.



GROW IT FORWARD'S RESPONSE



DPI

Unable to register Grow It Forward as own sponsor to meet partner needs. Gave one option—to partner with a school district in another community. 15 mile round trip.

Two Rivers School District

Two Rivers School District had only agreed to serve as the sponsor for the three congregate sites initially, and not provide for the non-congregate meals. They also couldn't provide delivery.

Partner Needs Assessment

Boys & Girls Club: Own sponsor, so they could contract with any meals service provider, but they didn't have access to transportation.

YMCA: Lacked transportation, storage capabilities or refrigeration.

Southfield Learning Center: Lacked transportation and storage.

COORDINATION & ADVOCACY

Grow It Forward

Reached out to Hunger Task Force for support in coordination and search for funding to cover transportation, staffing, and equipment needs for coordination. Acknowledged immediate capacity building need for van, volunteers, staffing, and storage/refrigeration....

Hunger Task Force

Helped facilitate conversation with No Kid Hungry. Made connections with potential food distributor in event Grow It Forward became its own sponsor.

MPSD School Board & Superintendent

MPSD Board was unaware of impact, as it was discovered they aren't involved in decision making related to summer meal budgeting. Superintendent acknowledged deficit due to increased costs but offered support in communication of new meal service options flyers.

Grant Funding Partners

Wrote for grant May 7th, end of May, funding released mid-July.
Wrote for grant to West Foundation, funding released July.
Wrote for grant to Nash Foundation, funding released August.



MEALS SERVED



Congregate Meals

Picked up Monday/Wednesday/Friday

YMCA, Boys & Girls Club, Southfield Learning Center

of Kids Served: 210

of Meals Served: 18,900

Story:

Mom of Head Start Kid

Neighbor of Grow It Forward

Non-Congregate Meals

Distributed Tuesday & Friday

Goal to Serve 100 Kids

of Kids Served: 120

of Meals Served: 6,960

BEHIND THE SCENES

^=Đđ.Í Œ φ Í 3
İ =-Ē FÄ Í 9J

Two Rivers School District recruited volunteers to assist with preparation of both congregate and non-congregate meals.

Congregate Volunteers

Learned that YMCA could use volunteers to distribute meals as staff stretched in many areas.

Learning to Pivot

Some things didn't go as planned.

- Volunteer Expectations
- Managing individuals not qualified for program
- Calendaring Logistics

Non-Congregate Volunteers

Additional food safety training for holding food in coolers while distributing drive-thru style.



LESSONS LEARNED



أولاً، نأخذ في الحسبان
~أ زج أ و ز ج

**Be Ready to
Pivot Past**

Strong Relationships Matter

Advocacy is Essential

Community hunger doesn't wait for red tape

Needs for the future - volunteers

Quality & Quantity - labeling, nutritional standards

WHAT WE STILL NEED



Clear DPI Guidance

Emergency response needed in this particular situation at the decision by MPSD to eliminate summer meals took place after deadline for new sponsor registration.

**Emergency
Response Grant
Funding &
Flexibility when
target moves**

**Funding for
Transportation
and Staffing**

WHY THIS MATTERS

Child's hungry belly doesn't care about labor or paper cost...

Saying YES when others said NO

Made possible by Donors, Grantors, Community Partnerships, and the Hunger Relief Federation!

Happy to Share Templates, Logistics, or Stories

Let's work together to ensure no child goes hungry!



© 2024 Hunger Relief Federation. All rights reserved. | 1 |

Summer Food Service Program (SFSP)

Milwaukee Summer Meals Collaborative

- Hunger Task Force and our partners served nearly 500,000 meals to kids in need through the USDA's Summer Meals Program
- Over 200 meal sites

Wisconsin Non-Congregate

- Increased from 30 to 40 sponsors
- Increased from 50 to 73 sites
- Granted over \$60,000 with NKH funding for new or expanding Non congregate sites/sponsors



Call to Action: Get Non-Congregate Summer Meal Service in Your Community



Do you live in
a rural
community?



Does your
community
have a summer
meal service?



Identify neighboring
communities by the
end of the year that
could have summer
meal service



Contact me and
work with us to
implement
service



Advertise
summer meals
services at your
organization



Summer meals is
a year-round task
and planning
begins soon



The Wisconsin Food Hub Cooperative



Tara Roberts-Turner

General Manager

Wisconsin Food Hub Cooperative



Look to Local Agriculture: Solving Problems with Local Food & Food Insecurity

Wisconsin's Continued Effort to Build Back Better



History of Wisconsin Food Hub

- Dane County's Southern Wisconsin Feasibility Study
- Incorporated as a Cooperative; October 2012
- The Food Hub started with 11 farmer members and the Wisconsin Farmers Union, as a founder member.
- Hubs serve as an aggregator for committed local suppliers
- Need to overcome scale and rebuild supply chain infrastructure for local foods



Wisconsin Food Hub Cooperative

- **Wisconsin Food Hub**

- 13th year
- over 200+ producers + 108 Ex-LFPA
- organic, conventional, value added, minimally processed, dairy & now meat (grass fed beef & pasture pork)

- **Current Sale Categories**

- Direct Retail/Distribution
- Food Service
- “365 Sales” - works to match smaller producers with smaller buyers - including products that can move all year
- Food Access partners and initiatives (LFPA, Tribal Elder Food Box, pilot for maternal health/lactating moms box w/Tribes)



Service of Food Hub

- Sales Team
- Marketing Materials
- Bookkeeping
- Logistics
- Liability Insurance
- Training Sessions & Yearly Manual
- Food Safety
- Farmer/Producer Run Support Teams
- Grant Writing
- Cooling & Technical Assistance



The Food Hub lets us concentrate on what we do best, grow vegetables. The Co-op does the sales and logistics, billing and marketing. This is great, leave that to the co-op staff and let me get out in the field!

Steve Hoekstra, Hoekstra's Sweet Corn

How did we get here?

1. Roundys'/Sysco
2. Half to Full Semi Loads
3. No Offices

STAGE 1: Gathering Partners/ Large Accounts

STAGE 2: Purchasing a Warehouse Building (Waupaca)

1. Aggregation Point
2. Local Transportation
3. Expanding Sales

1. Creation of WFHC Transport
2. Expanding Partnerships to generate year round business/off season
3. Building up Customers

STAGE 3: WFHC Transport

STAGE 4: Community Building

1. Community Programs*
2. 365 Program
3. Building Logistical Efficiency

*Food Banks/Pantries, Tribes, Schools and Childcare Centers

1. Formation of the Super Transport Cooperative

STAGE 5: Providing Efficiency for Statewide/Midwest Transport

The logo features a central illustration within a light green arch. From left to right, it depicts a barn, a delivery truck, and two hands holding a shopping cart. Below this illustration is a dark blue horizontal bar with the text "WISCONSIN LOCAL FOOD" in white, bold, uppercase letters. The bar is flanked by two green horizontal bars. Underneath the blue bar, the text "Purchase Assistance Program" is written in a smaller, grey font.

WISCONSIN LOCAL FOOD

Purchase Assistance Program





2024 WI
LFPA Routes
operated by
the
Wisconsin
Food Hub
Cooperative,
based out of
their
Waupaca
warehouse

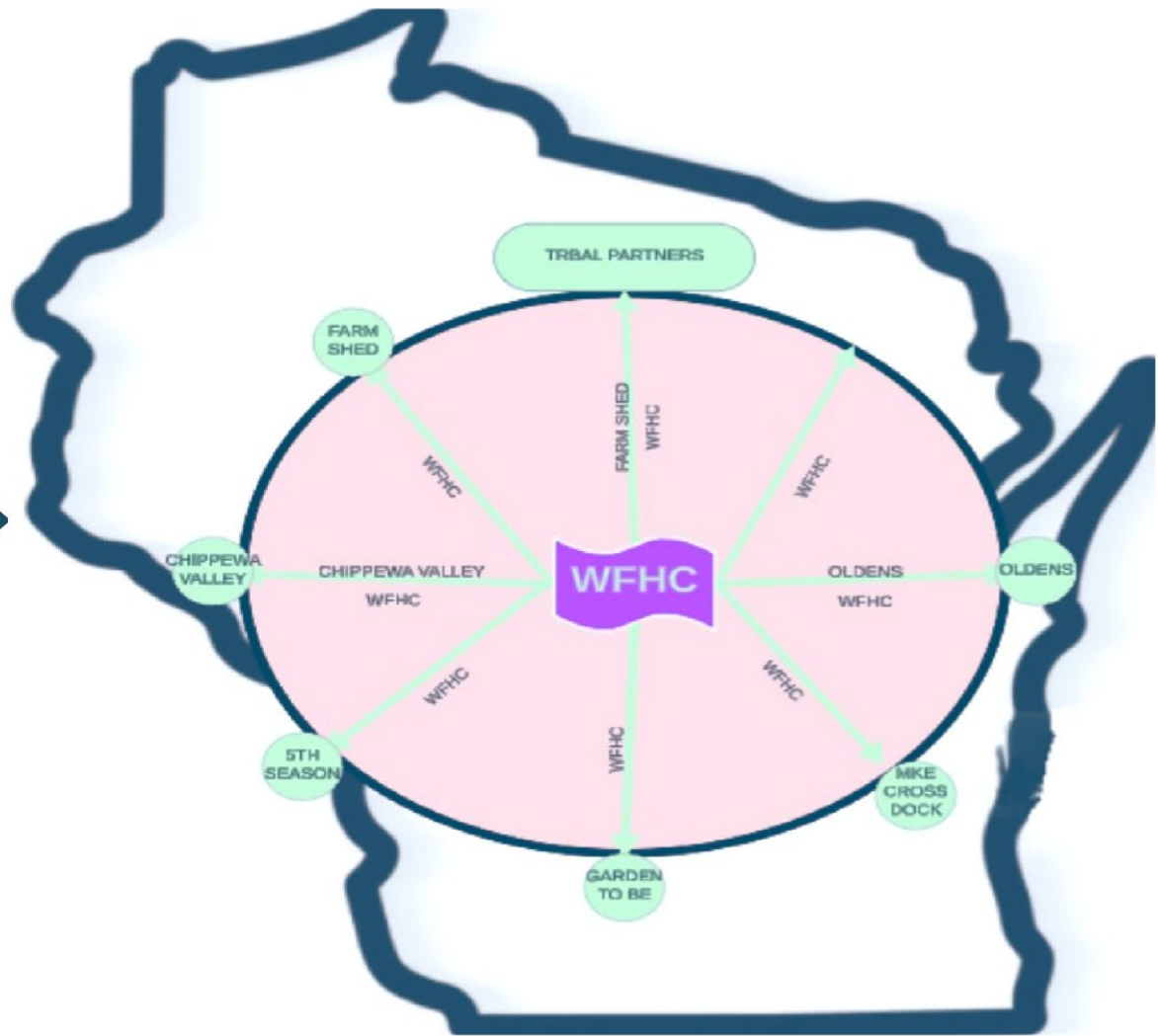


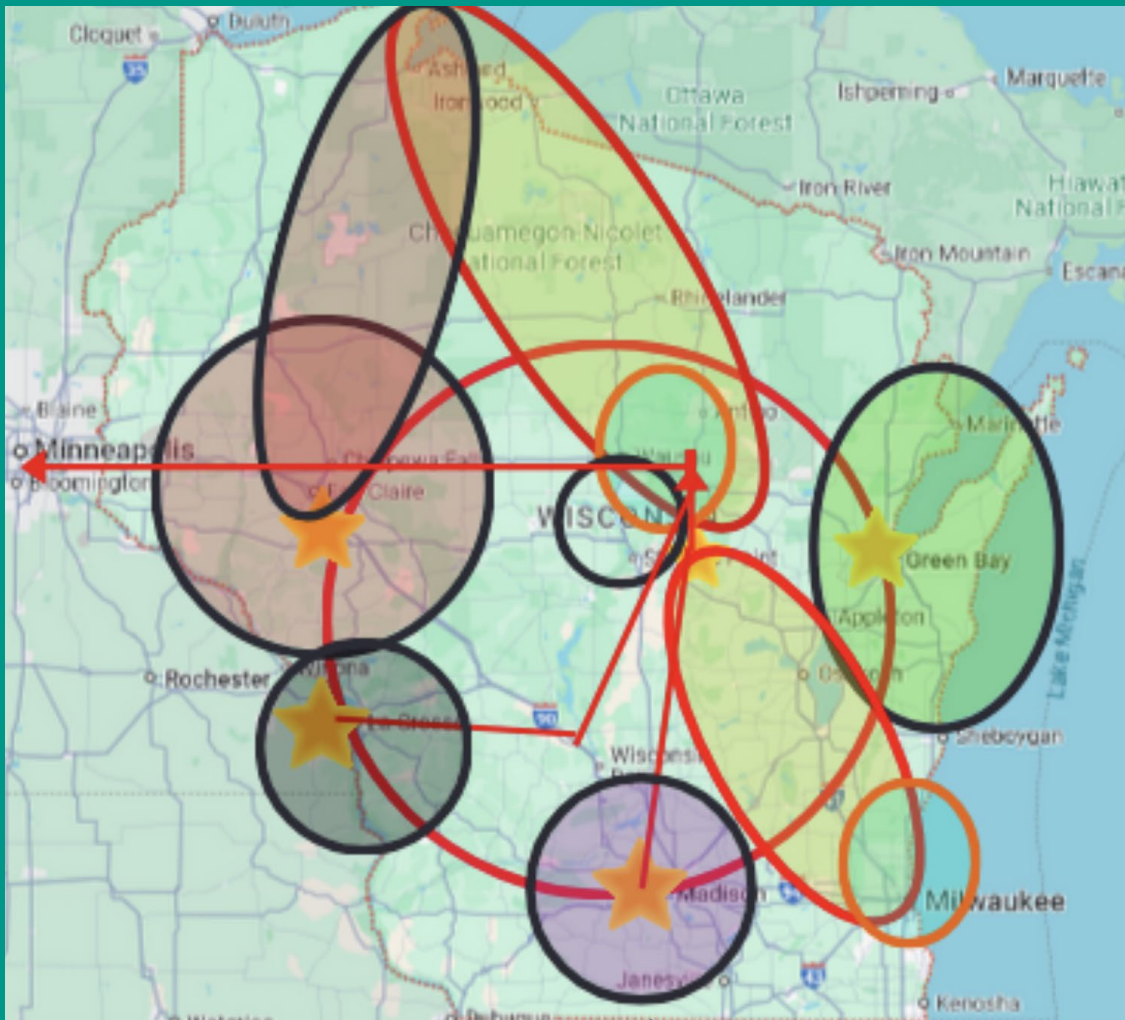
The Logic of the Routes

Routes are created or adjusted based on several factors:

1. Freshness
2. Improving access
3. Improving efficiencies
4. Proper Tools
5. Sustainability

Moving to an alternate logistics/distribution model





Building a Super Transport Cooperative

Wisconsin Economic Development Corporation (WEDC) has provided a small grant to conduct a feasibility study

A main goal is to bring together possible collaboration partners to understand the shared needs to mutually support each other's work

Why are we here?

Build Back Better/Cooperation/Political Atmosphere - Cutting of numerous contracts

Sustainability:

- If we lose our Super Transport Cooperative funding only 3 years into our creation we will roll back to a time period before covid - impacting all of our transport partnerships - big and small! Domino Effect.
- 6 routes from 18 - Losing Infrastructure
- Partnerships

TURNER FRESH MARKET *of* **THE TURNER FAMILY**
WAUPACA, WI



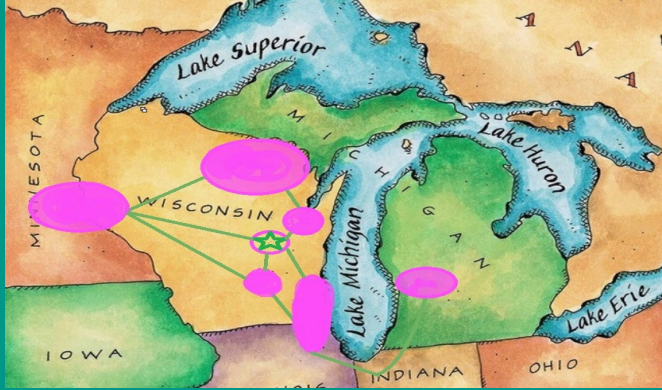
“THE ULTIMATE GOAL OF FARMING IS NOT THE GROWING OF MASS PRODUCED CROPS PERSE, BUT GROWING CROPS THAT ARE OF VALUE TO YOUR COMMUNITY YOU LIVE IN.”

- TARA TURNER.

Developing A Sustainable Plan

- Continue with Super Transport Cooperative
- Continue to make WI a strong state for retail wholesale
- Create a system not dependent on federal funding

Continue with Super Transport Cooperative



r "Ō̃ †" d!B Ō̃ Ō̃ œ̃ xŌ̃ Ê!ù Ì Êπ! !!|Ä" †Ê! · Ì "ø! πÂ Aπ" †-
┌ B" †Êμ! † · Q! β" ππÊ! † d
┌ - †μŌ̃ Ì Ê
┌ - Ō̃ †- < ππ [WtÊ! † .. †
┌ - Ō̃ Ê † y d! †- f! ┌ .. Ō̃ f!
┌ - Ä" Ō̃ Ê f! † d Ō̃ Ê! ┌ † † d r" Ê! J! S †
┌ JÊμ Ō̃ Ê! · Ì fŌ̃ ┌ f! π † Êμ



Con



This March, works increased in agriculture in \$104.7 billion jobs for Michigan to the hard-working ensuring Michigan global power

HAVE A BRIDGE CARD?



GET DOUBLE THE FRUITS & VEGGIES

WITH DOUBLE UP FOOD BUCKS



250+ LOCATIONS

If you have a Bridge Card, you can use Double Up at farmers markets & grocery stores across Michigan.



FIND A PARTICIPATING LOCATION AT



DoubleUpFoodBucks.org

DOUBLE UP FOOD BUCKS IS A FAIR FOOD NETWORK PROGRAM

business who od and industry brings in ting good-paying rs and producers e plays a part in dustry remains a

e

Michigan: T

Feed You

Continue to make WI a strong state for wholesale

Wisconsin agriculture is a

- Food processing ac
- The state is home to

Wisconsin agriculture pro

- Annually, 353,900 jc
- On-farm activity con
- Processing contribu

Wisconsin is one of the to

- In 2024, Wisconsin
- The state ranks four

According to USDA reports from 2024 and 2025, Wisconsin's annual wholesale fresh produce production includes: [↗](#)

- **Snap beans:** 4.28 million cwt in 2024 and 6.75 million cwt in 2023.
- **Sweet corn:** 8.58 million cwt in 2024 and 10.7 million cwt in 2023.
- **Green peas:** 846,400 cwt in 2024 and 1.39 million cwt in 2023.
- **Potatoes:** 67,500 acres harvested in 2023, with half used for fresh consumption and the other half for processing.
- **Cranberries:** 5.49 million barrels in 2024. [↗](#)

Note: "Wholesale fresh produce" figures are sometimes specified in these reports, but overall crop totals (fresh and processed) are more commonly available. [↗](#)

Additional context

- **Nationally ranked production:** Wisconsin is a top producer of cranberries, snap beans, green peas, sweet corn, and potatoes for processing.
- **Processed vs. fresh:** The USDA often separates produce figures by fresh-market and processed usage. For example, in 2024:
 - **Snap beans:** 98,500 cwt were fresh, while 209,059 tons were for processing.
 - **Sweet corn:** 686,400 cwt were fresh, with 394,251 tons for processing.
 - **Green peas:** 800 cwt were fresh, and 42,278 tons were for processing.
- **Specialty crops:** The state also produces a variety of other specialty crops, such as cabbage, cucumbers, beets, pumpkins, and ginseng.

to our state's economy.

ize in Wisconsin is 236 acres.

bles.

green peas.
on 67,500 acres in 2023.

•Create a system not dependent on federal funding

- Creation of Coalitions with non-profit arms
- WFHC short term and long term raise for the Super Transport Cooperative
- Requires support from all sectors
- Remember - A big part of how we have created the WFHC has been from learning from all of you!

Tara Roberts-Turner
General Manager and Founding Farmer
tara@wifoodhub.com
715 227 1990

Sarah Lloyd
Director of Development
slloyd@wifoodhub.com
920 210 7335



Operations, Inventory and Logistics - Supporting the Flow of Foods



Kelli Hirt
Director of WI Food and
Nutrition Services
Vivent Health



Tara Roberts-Turner
General Manager
Wisconsin Food Hub Cooperative



Shelly Fortner
Executive Director
Hunger Task Force of La Crosse

Beyond the Food Box - Intake Best Practices



Imelda Román

Site Developer

Hunger Task Force



Beyond the Food Box – Intake Best Practices

- Make your waiting room and intake areas welcoming.
- Your intake is a place where privacy is key.
- Have relevant information available, recipes, resources, etc.



Beyond the Food Box – Intake Best Practices

Smile



Always



Have



Offer



Beyond the Food Box – Intake Best Practices



- What information do you need to collect for your agency?
- Consider information needed for:
 - Annual Reports
 - Board of Directors
 - Donor Requests
 - Fund Requests

Hunger Task Force Generic Additional Information Card Sept-2025

Applicant Last Name	First Name	Middle Initial	Email or Phone Number	Pantry Name				
Applicant Street*	City	Zip Code	Proxy: Name(s) of person(s) designated to pick up food on behalf of applicant's household					
Does your household currently receive FoodShare (food stamps)? <input type="checkbox"/> Yes, we do <input type="checkbox"/> No, we applied, we do not qualify <input type="checkbox"/> No, we would like to apply <input type="checkbox"/> No, we do not wish to apply.								
Would you like information about FoodShare? <input type="checkbox"/> Yes <input type="checkbox"/> No								
	Proof of Household Member Once	Names of Household Members (Head of household ID checked each time)			Age			
			Birth to 17	18 to 59	60+			
1.	<input type="checkbox"/>		<input type="checkbox"/>	<input type="checkbox"/>	<input type="checkbox"/>			
2.	<input type="checkbox"/>		<input type="checkbox"/>	<input type="checkbox"/>	<input type="checkbox"/>			
3.	<input type="checkbox"/>		<input type="checkbox"/>	<input type="checkbox"/>	<input type="checkbox"/>			
4.	<input type="checkbox"/>		<input type="checkbox"/>	<input type="checkbox"/>	<input type="checkbox"/>			
5.	<input type="checkbox"/>		<input type="checkbox"/>	<input type="checkbox"/>	<input type="checkbox"/>			
6.	<input type="checkbox"/>		<input type="checkbox"/>	<input type="checkbox"/>	<input type="checkbox"/>			
7.	<input type="checkbox"/>		<input type="checkbox"/>	<input type="checkbox"/>	<input type="checkbox"/>			
8.	<input type="checkbox"/>		<input type="checkbox"/>	<input type="checkbox"/>	<input type="checkbox"/>			
9.	<input type="checkbox"/>		<input type="checkbox"/>	<input type="checkbox"/>	<input type="checkbox"/>			
10.	<input type="checkbox"/>		<input type="checkbox"/>	<input type="checkbox"/>	<input type="checkbox"/>			
11.	<input type="checkbox"/>		<input type="checkbox"/>	<input type="checkbox"/>	<input type="checkbox"/>			
12.	<input type="checkbox"/>		<input type="checkbox"/>	<input type="checkbox"/>	<input type="checkbox"/>			
Date Referred:		Date Referred:		Date Referred:		Date Referred:		
School Meals (September-June) <ul style="list-style-type: none"> All students enrolled in schools with National School Lunch and School Breakfast Programs can receive a free, reduced-price or full-price meal depending on household income. To apply, complete a school meal application for your school-age children every year. To find out more go to: https://mps.milwaukee.k12.wi.us/en/home/LunchMenu.htm Email shobnutr@milwaukee.k12.wi.us Call 414-475-8370 Visit your local neighborhood school 		WIC (Women, Infants and Children) <ul style="list-style-type: none"> Provides pregnant woman, parent or guardian of child up to 5 years old with nutritious food to supplement their diets. WIC also provides information about nutrition and breast-feeding. Eligibility depends on household income. To find out more or apply go to: https://www.dhs.wisconsin.gov/wic/index.htm Email help@wellbadger.org Call 800-642-7837 Text 609-360-9328 Visit a WIC clinic near your home 		CSFP/Stockbox/Cupboard Bound <ul style="list-style-type: none"> Available to income and age eligible seniors, must be 60 years and older. Includes a variety of nutritious items such as cereal/oat, rice/pasta, powdered milk, cheese, canned meat, peanut butter, canned veggies and fruit, fruit juice, dry beans. The CSFP/Stockbox is available once a month. The senior can designate a proxy to pick up the box on their behalf. To find out more go to: https://www.dhs.wisconsin.gov/nutrition/csfp.htm Reach out to the local CSFP provider 		Summer Meals (June-August) <ul style="list-style-type: none"> Provides breakfast, lunch and/or supper for all children (0-18 yrs old) during the summer. All children are eligible regardless of enrollment status. To find out more call 414-773-0211, 2-1-1 or toll free 866-211-3280, or you're your zip code to 898-2111 		

The Emergency Food Assistance Program (TEFAP) Eligibility Application

Distribution site name and location		Initial application date
Applicant name		Total number in household
Wisconsin resident <input type="checkbox"/> Yes <input type="checkbox"/> No	Meets income level <input type="checkbox"/> Yes <input type="checkbox"/> No	Must reapply on first visit after Oct. 1 each year.

I certify, by self-attesting, that I am eligible to receive USDA foods being that I reside in Wisconsin, and my total household income is 200% or less of the Federal Poverty Guidelines listed below or current level on addendum. I will use this food only for home consumption. This form is in connection with the receipt of federal assistance. Application is valid for up to one year, changes in household information must be reported immediately. I release USDA, the State of Wisconsin and its agents from any liability resulting from my receipt of this food. **False information may subject me to prosecution and require me to repay the value of the benefits.**

Household size	1	2	3	4	5	6	7	8	Each additional
Gross income before taxes and deductions-of all household members.									
Yearly	\$31,300	\$42,300	\$53,300	\$64,300	\$75,300	\$86,300	\$97,300	\$108,300	\$11,000
Monthly	\$2,608	\$3,525	\$4,442	\$5,358	\$6,275	\$7,192	\$8,108	\$9,025	
Weekly	\$602	\$813	\$1,025	\$1,237	\$1,448	\$1,660	\$1,871	\$2,083	

I authorize the following person to pick up USDA foods on my behalf as a proxy:

Date/number served	Date/number served	Date/number served

In accordance with federal civil rights law and U.S. Department of Agriculture (USDA) civil rights regulations and policies, this institution is prohibited from discriminating on the basis of race, color, national origin, sex (including gender identity and sexual orientation), disability, age, or reprisal or retaliation for prior civil rights activity. Program information may be made available in languages other than English. Persons with disabilities who require alternative means of communication to obtain program information (e.g., Braille, large print, audiotape, American Sign Language), should contact the responsible state or local agency that administers the program or USDA's TARGET Center at (202) 720-2600 (voice and TTY) or contact USDA through the Federal Relay Service at (800) 877-8339. To file a program discrimination complaint, a Complainant should complete a Form AD-3027, USDA Program Discrimination Complaint Form which can be obtained online at: <https://www.usda.gov/sites/default/files/documents/USDA-OASCR%20P-Complaint-Form-0508-0002-508-11-28-17Fax2Mail.pdf>, from any USDA office, by calling (866) 632-9992, or by writing a letter addressed to USDA. The letter must contain the complainant's name, address, telephone number, and a written description of the alleged discriminatory action in sufficient detail to inform the Assistant Secretary for Civil Rights (ASCR) about the nature and date of an alleged civil rights violation. The completed AD-3027 form or letter must be submitted to USDA by: 1. mail: U.S. Department of Agriculture Office of the Assistant Secretary for Civil Rights 1400 Independence Avenue, SW Washington, D.C. 20250-9410; or 2. fax: (833) 256-1665 or (202) 690-7442; or 3. email: Program.Intake@usda.gov.

Beyond the Food Box – Intake Best Practices

- Households only declare whether they are a Wisconsin resident with a Yes or No.
- There is a new a check box for income level response as well.
- New income guidelines are printed on the card (the income level will change every year)
- The Intake Card has a notation that applicants must reapply on their first visit after October 1st of each year.
- There are now three columns titled “Date/number served” with 12 spaces in each column, making the card usable for at least three years.
- The rest of the card remains the same with the self-attestation paragraph above the income limits graph, the space to enter the name of a proxy at the bottom of the grid, and the civil rights statement at the bottom of form.

Nutrition Education and Outreach - How You Can Be Involved



Carmen Baldwin
Community Nutrition Manager
Hunger Task Force



Melanie Foland
Child Nutrition Educator
Hunger Task Force



Leah Kostos
Community Nutrition Educator
Hunger Task Force

Donor Stewardship



Will Skrundz
Donor Database Manager
Hunger Task Force



Camille Robert-Quakkelaar
Major Gifts Officer
Hunger Task Force

The Next 20-Minutes

- 1. Data, Database Management*
- 2. How to Use Your Data*
- 3. Donor Stewardship*

Data – High Level Points

- *Good data in = good data out*
- *Be consistent! It's much easier to compare apples to apples, than apples to broccoli*
- *It's important to collect as much data and information as possible*
 - *Evaluate what data is important to your organization*
- *Data and your databases are a tool – it's important to know how to use them*
- *Ask yourself "What are we trying to accomplish?" to help guide your path*

Where to Collect Data?

Any collection of data in a central location is a database!

- *Paid Databases - Raisers Edge, Blackbaud, Salesforce, DonorPerfect, Fundraise Up, etc...*
- *DIY Databases – Excel Spreadsheet, Google Docs, etc...*
 - *Recommended you have a backup in case of error (ex: the file gets deleted)!*

What Data to Collect?

Contact Information

- First and last name
- E-mail address
- Phone number(s)
- Mailing address

Additional Data

- Birthdays
- Spouse/Family Members
- Organizational contact(s)
- “Do not contact”

What Data to Collect?



Yes! I want to end hunger by making a contribution to Hunger Task Force in the amount of: \$50 \$100 \$250 \$_____ (other)

Please apply my gift toward the following (check all that apply):

Wherever the need is greatest Emergency Food Programs In honor of In memory of
 Education and Advocacy Outreach Programs Hunger Task Force Farm

PLEASE PRINT:

Name: _____
Current/New Address: _____
City: _____ State: _____ Zip: _____
Phone: _____ E-mail: _____

Card to: _____
Address: _____

PAYMENT METHOD

Check # _____ If your employer matches, please enclose the form.
Please make checks payable to: "Hunger Task Force"

Charge \$ _____ Visa Mastercard Amex Discover

Account # _____ Exp. Date: _____
Signature: _____ CVV: _____

Would you like to help fight hunger year round? Visit HungerTaskForce.org to make a monthly contribution via credit card or connect with your bank to set up a recurring payment via check.

Your gift to Hunger Task Force is tax-deductible as allowed by law.



5000 W. Electric Avenue
West Milwaukee, WI 53219
Phone: 414-777-0483

www.HungerTaskForce.org

What Data to Collect, Cont'd...

Yes! I want to end hunger by making a contribution to Hunger Task Force in the amount of: \$50 \$100 \$250 \$_____ (other)

Please apply my gift toward the following (check all that apply):

- | | |
|---|--|
| <input type="checkbox"/> Wherever the need is greatest | <input type="checkbox"/> Emergency Food Programs |
| <input type="checkbox"/> Education and Advocacy Outreach Programs | <input type="checkbox"/> Hunger Task Force Farm |

- In honor of In memory of

PLEASE PRINT:

Name: _____

Current/New Address: _____

City: _____ State: _____ Zip: _____

Phone: _____ E-mail: _____

Card to: _____

Address: _____

What Data to Collect, Cont'd...



PAYMENT METHOD

Check # _____ If your employer matches, please enclose the form.

Please make checks payable to: "Hunger Task Force"

Charge \$ _____ Visa Mastercard Amex Discover

Account # _____ Exp. Date: _____

Signature: _____ CVV: _____

Would you like to help fight hunger year round? Visit HungerTaskForce.org to make a monthly contribution via credit card or connect with your bank to set up a recurring payment via check.

Your gift to Hunger Task Force is tax-deductible as allowed by law.



5000 W. Electric Avenue
West Milwaukee, WI 53219

Phone: 414-777-0483

www.HungerTaskForce.org



How To Use Your Data?

Solicitations

- E-blasts
- Direct mail solicitation
- Donor correspondence, thank you's and stewardship
- Event invitations

Reporting & Segmenting

- Fundraising and campaign success
- Return on investment
- Donor identification
- New and returning donors

What is Stewardship?

Donor stewardship is the process of nurturing and maintaining relationships with donors to encourage their ongoing support for a nonprofit organization. It involves consistent communication, gratitude, and engagement to ensure that donors feel valued, informed, and connected to the organization's mission.

Good stewardship is critical for continuing support!



What can stewardship look like?

Taking the donor
to coffee or a
meal



Emailing or
texting a video of
thanks



Sending a letter of
thanks



Calling to say
thank you



Sample Language

Dear Name -

Thank you for your generous gift of \$X. Your support helped us to [insert impact]. We are so grateful for the many years you have been giving, and hope you know how big of an impact you have made on our organization and community.

Thank you for feeding our community!

Warmly, Name

Personalized = Better

What would you like to receive?

Find the stewardship that works best for you, don't get too complicated!

Welcome and Previous Day Recap



Mark Lisowski

Hunger Relief Federation Organizer
Hunger Task Force



Member Highlight: *Paul's Pantry*



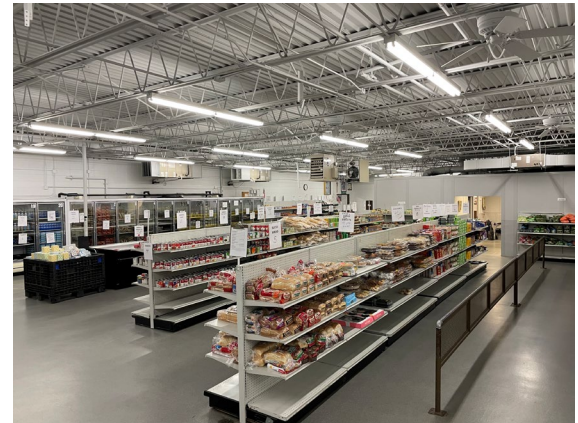
Bob Hornacek
Assistant Executive Director
Paul's Pantry



Paul's Pantry

SINCE 1984

*Neighbors
Feeding
Neighbors*



Paul's Pantry SINCE 1984

Neighbors Feeding Neighbors

- 100% COMMUNITY SUPPORTED, **FREE** GROCERY STORE-STYLE FOOD PANTRY EXCLUSIVELY FOR FAMILIES IN NEED.
- IT'S NOT ABOUT FOOD.
- IT'S ABOUT **PEOPLE.**
- IT'S ABOUT **DIGNITY.**



 **Paul's Pantry** SINCE 1984
Neighbors Feeding Neighbors



- RELIES EXCLUSIVELY ON DONATIONS
- NO GOVERNMENT FOOD
- NO GOVERNMENT FUNDING

Paul's Pantry SINCE 1984

Neighbors Feeding Neighbors



- Leo Frigo
- President, Frigo Cheese
- Founded Paul's Pantry



 **Paul's Pantry** SINCE 1984
Neighbors Feeding Neighbors



“It’s better that I go into the dumpster rather than making the poor go there. At the end of the day my dignity will be intact and so will theirs.”

– **Leo Frigo**



- **255** Households Served
PER DAY
- **75-100** Pounds PER CART





- **20,000** Pounds Distributed
PER DAY
- **5-MILLION** Pounds of Food
Distributed PER YEAR



Paul's Pantry SINCE 1984

Neighbors Feeding Neighbors



- **RESCUE** – GROCERY STORES, CONVENIENCE STORES, RESTAURANTS, MANUFACTURERS
- **FOOD DRIVES** – CHURCHES, BUSINESSES, SCHOOLS, COMMUNITY MEMBERS
- **FOOD PURCHASING** – MILK, BUTTER, EGGS, CHICKEN, ETC.

Paul's Pantry SINCE 1984

Neighbors Feeding Neighbors



- 33 VOLUNTEERS PER DAY
- 60,000 VOLUNTEER HOURS PER YEAR
- MAJORITY OF VOLUNTEER HOURS COMPLETED BY RECIPIENTS



QUESTIONS?





- CONTACT INFORMATION:

- Bob Hornacek
- Assistant Executive Director
- (920) 433-0343 ext. 132
- bob@paulspantry.org





April Yancer

Farm to School and Institution
Program Specialist

*The Department of Agriculture, Trade
and Consumer Protection*






Wisconsin Department of Agriculture, Trade & Consumer Protection

Division of Agricultural Development

April Yancer, Farm to School and Institution Program Specialist
October 2025



To strengthen food
system partners in
Wisconsin

- Production
- Processing
- Distribution
- Infrastructure



ECONOMIC AND INNOVATION CENTER



DAIRY RECOVERY PROGRAM

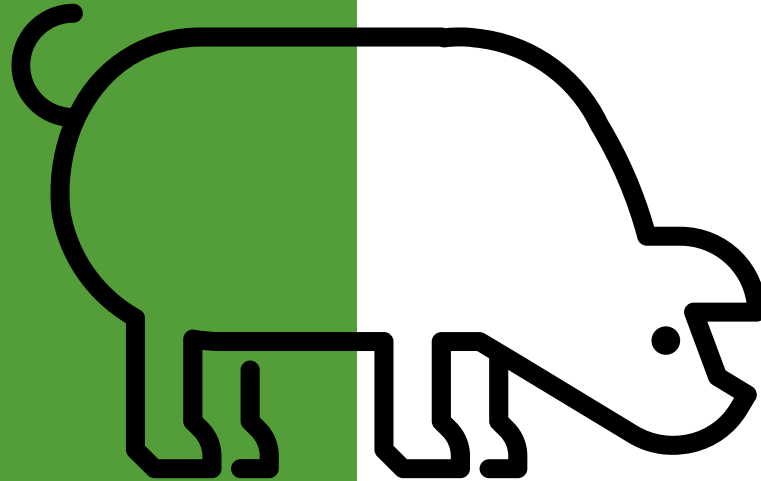


Purchased surplus milk and dairy products from struggling farmers and redirected them to food banks and community organizations serving individuals experiencing hunger.

Millions of pounds of milk, cheese and yogurt that would have otherwise gone to waste. DATCP staff connected to Hunger Task Force to dairy processors.

PASSION FOR PORK

DATCP partnered with the **Wisconsin Pork Association** to ensure pigs were moving through processing. **Pork** was donated and later sold to food banks.



EMERGENCY CARES ACT FOOD SECURITY INVESTMENTS THROUGH DATCP

\$65 MILLION
FOR INFRASTRUCTURE INVESTMENTS
FOOD PURCHASES

DISTRIBUTED TO FEEDING WISCONSIN AND HUNGER TASK FORCE
NETWORKS



\$1.5 MILLION ANNUALLY

DATCP RECOGNIZES THE

SIGNIFICANCE OF FOOD

SOVEREIGNTY TO THE TRIBAL

NATIONS AND VALUES THE

OPPORTUNITY TO

COLLABORATE THROUGH THIS

FUNDING TO PURCHASE AND

DISTRIBUTE CULTURALLY

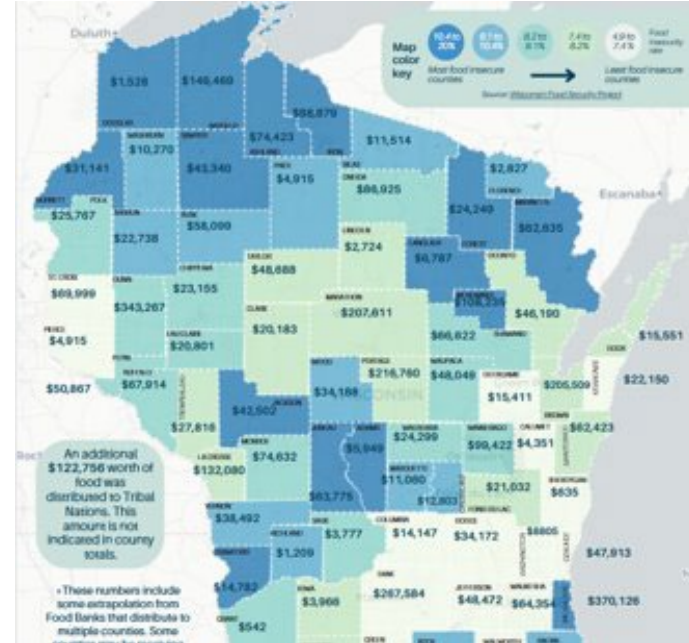
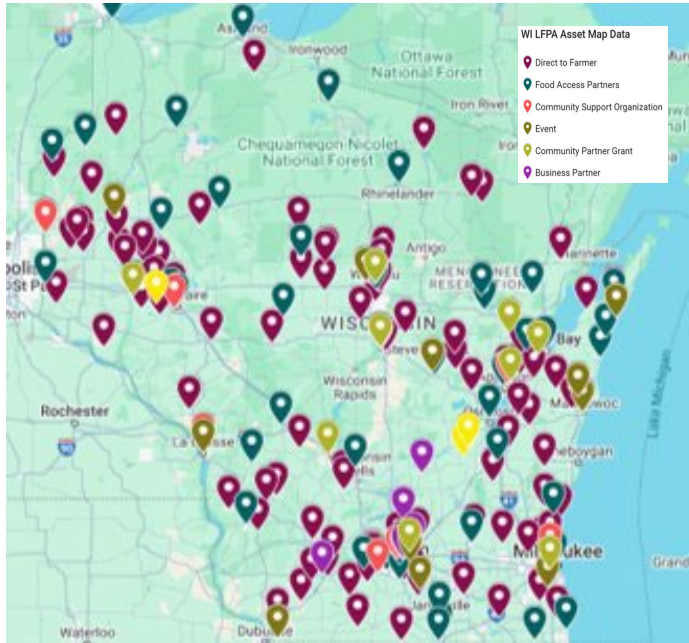
APPROPRIATE FOODS IN THE

TRIBAL NATIONS

TRIBAL ELDER COMMUNITY FOOD BOX
GRANT PROGRAM

Wisconsin Local Food Purchase Assistance Program

\$4.5 MILLION IN WISCONSIN FOOD DELIVERED TO WISCONSIN COMMUNITIES



Resilient Food Systems Infrastructure Program



2025 – 2027
STATE
BUDGET

\$5 MILLION
ANNUALLY LOCAL
FOOD PURCHASES

FOOD SECURITY AND WISCONSIN PRODUCTS GRANT PROGRAM

THE WISCONSIN DEPARTMENT OF AGRICULTURE, TRADE AND CONSUMER PROTECTION (DATCP) FOOD SECURITY AND WISCONSIN PRODUCTS PROGRAM IS DESIGNED TO PROVIDE GRANTS TO WISCONSIN'S NONPROFIT FOOD ASSISTANCE ORGANIZATIONS FOR THE PURPOSE OF PURCHASING AND DISTRIBUTING FOOD TO WISCONSIN COMMUNITIES AT NO COST AND SUPPORTING THE GROWTH AND OPERATIONS OF FOOD PRODUCERS/PROCESSORS IN WISCONSIN.



April Yancer Division of Ag Development
April.yancer@wi.gov

SNAP/FoodShare Updates



Allen Castillo

Public Policy & Outreach Manager
Hunger Task Force



Supporting Clients with FoodShare

Updates, Barriers, and Practices for Access





Key Fact:

SNAP is the largest anti-hunger program in the country with over 41,000,000 people served nationwide.

Wisconsin:

Over 700,000 residents - 12% of the population (1 in 8)

60% - Families with children

36% - Older adults or people with disabilities

45% are in working families

**FoodShare isn't just food
assistance.**

**It's a  that unlocks access to better
health, stability, and opportunity.**

DIGNITY • JUSTICE • COMPASSION • STEWARDSHIP

Recent Updates: New Income Limits

Effective October 1, 2025, through September 30, 2026

Household size	*200% FPL Gross Income Limit	130% FPL Gross Income Limit Reporting Limit	Maximum Allotment
1	\$2,610	\$1,696	\$298
2	\$3,526	\$2,292	\$546
3	\$4,442	\$2,888	\$785
4	\$5,360	\$3,483	\$994

+3.05%

Recent Updates: New Work Requirements Incoming



Per H.R. 1:

SEC. 10102. MODIFICATIONS TO SNAP WORK REQUIREMENTS FOR ABLE-BODIED ADULTS.

(a) **EXCEPTIONS.**—Section 6(o) of the Food and Nutrition Act of 2008 (7 U.S.C. 2015(o)) is amended by striking paragraph (3) and inserting the following:

“(3) **EXCEPTIONS.**—Paragraph (2) shall not apply to an individual if the individual is—

“(A) under 18, or over 65, years of age;

“(B) medically certified as physically or mentally unfit for employment;

“(C) a parent or other member of a household with responsibility for a dependent child under 14 years of age;

*Projected to start *sometime* in 2026

Recent Updates: Tools & Innovations

Easier process for replacing lost benefits:

The screenshot shows the ACCESS portal interface. On the left is a navigation menu with options like 'View my letters', 'Account settings', 'Update contact info', 'Manage Benefits', 'Apply for benefits', 'Renew my benefits', 'Report a change', 'Submit documents', 'Submitted documents', 'Manage my HMO', 'Get an Explanation of Benefits', 'Food Benefits Replacement Request', 'Get a new Forward-Health card', 'Request a 1095-B tax form', 'Learn More', and 'Explore programs'. The main content area is titled 'My Benefits' and shows a table of active benefits. Below this is a section for 'My Renewals/Six-Month Report Forms' with a table showing a renewal for FoodShare.

Benefits	Status	Details
FoodShare		
BadgerCare Plus		
Child Care		
W-2		
Summer EBT		

Who	Type	Benefits	Status	Details
PA	Renewal	FoodShare	Processed	View

Maintaining is easier for those who need it most:

36-Month Certification Periods for Certain Eligible FoodShare Households and New Option to Budget One-Time Medical Expenses

CROSS REFERENCE

- FoodShare Wisconsin Handbook, [Section 2.1.3 Interviews](#), [Section 2.2 Renewals](#), [Section 4.6.4 Medical Expenses](#), and [Section 6.1.2 Six Month Reporting Requirement](#)

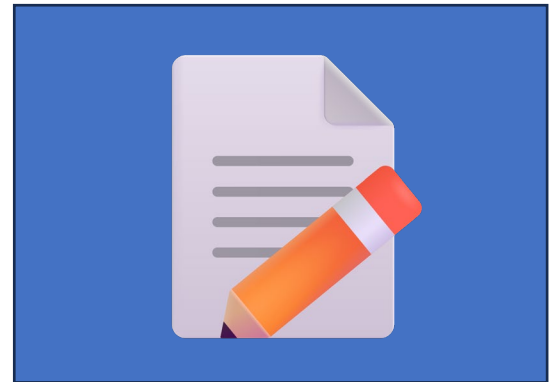
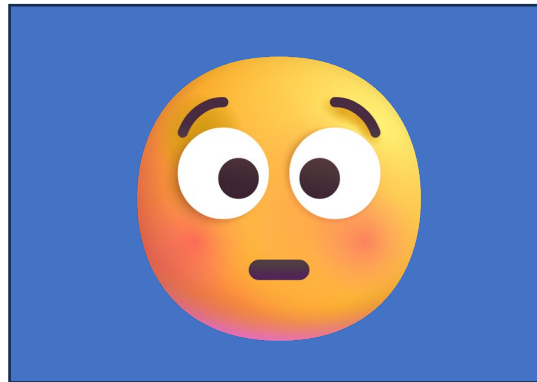
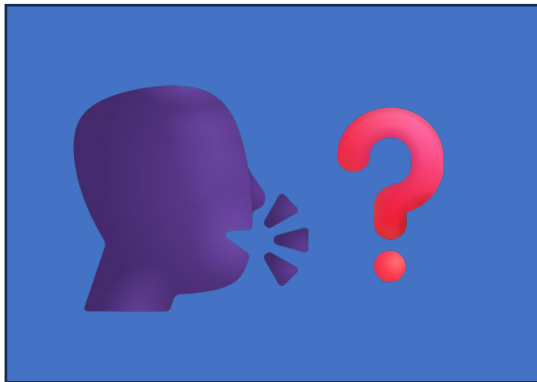
EFFECTIVE DATE

November 1, 2024

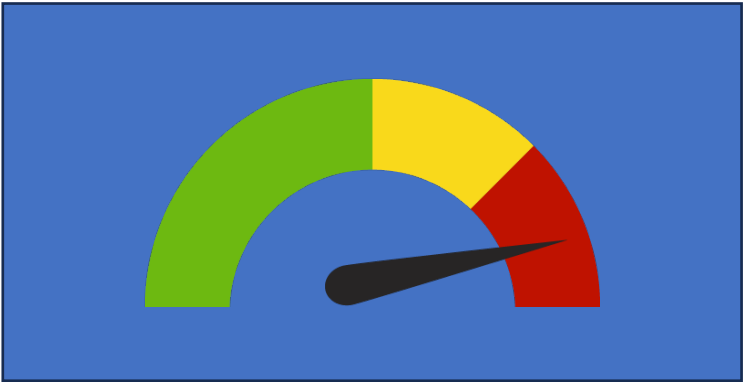
PURPOSE

This memo announces a new policy of 36-month FoodShare certification periods for certain elderly, blind, or disabled (EBD) FoodShare households. It also announces a new option to budget one-time medical expense deductions for FoodShare households with 36-month certification periods.

Common Barriers for Guests



What Barriers Mean for Pantries

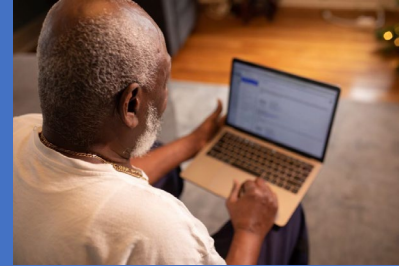


Tools and Strategies

Know where to direct them:
(Post it visibly for guests and for staff/volunteers)



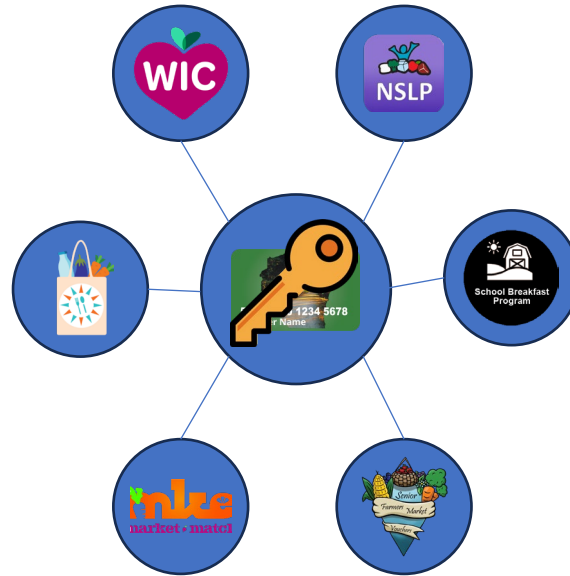
Provide technology:
(Laptop, phone, privacy)



Take advantage of the pre-made flyers:
(DHS Forms & Publications Library)

Tell them how modern the program is:
(Online Shopping)

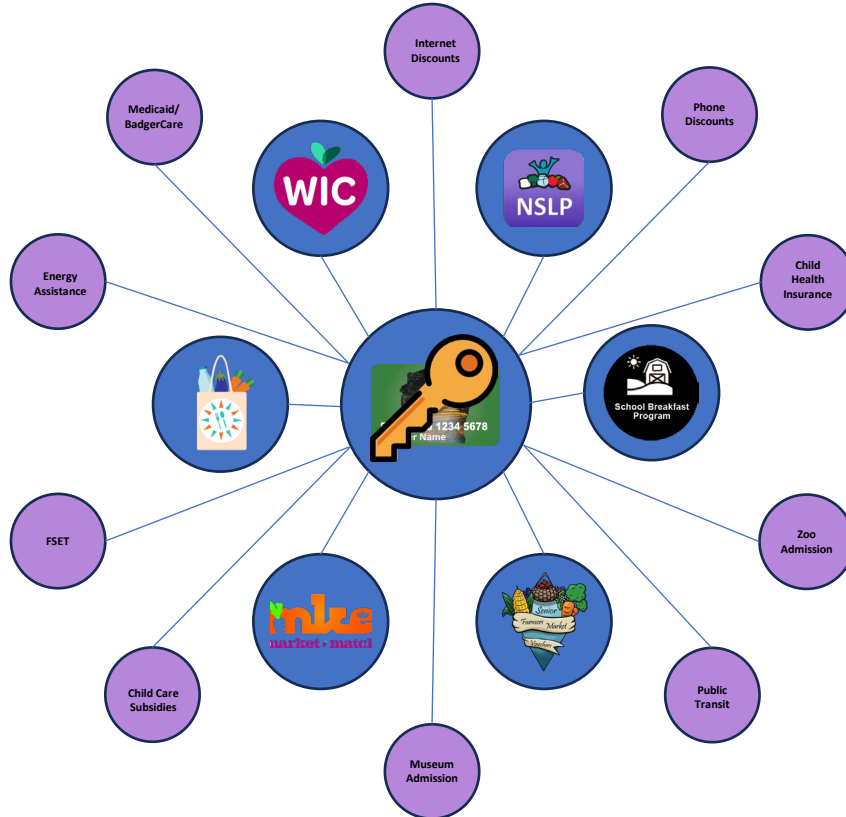
Beyond FoodShare



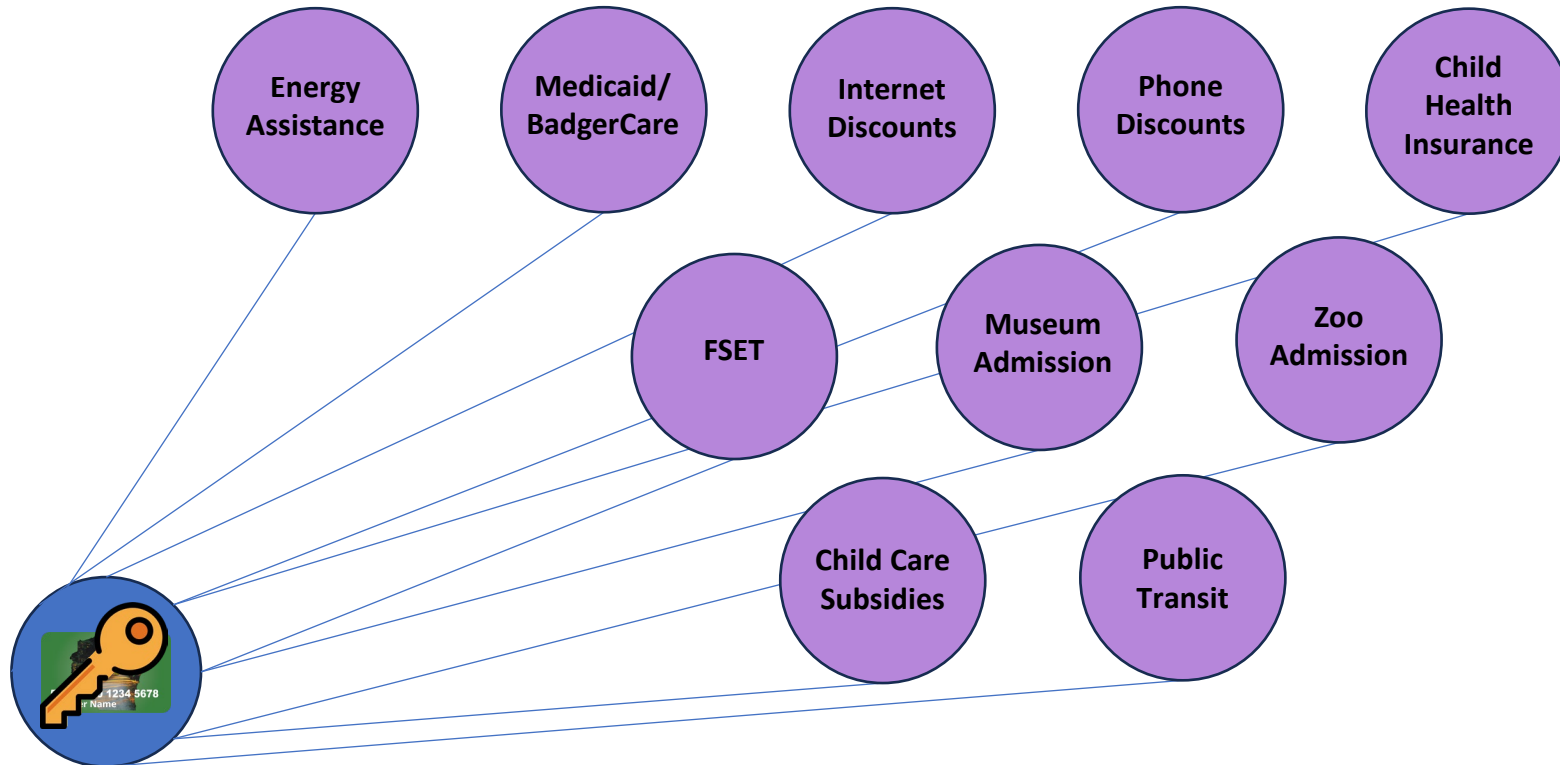
Beyond FoodShare



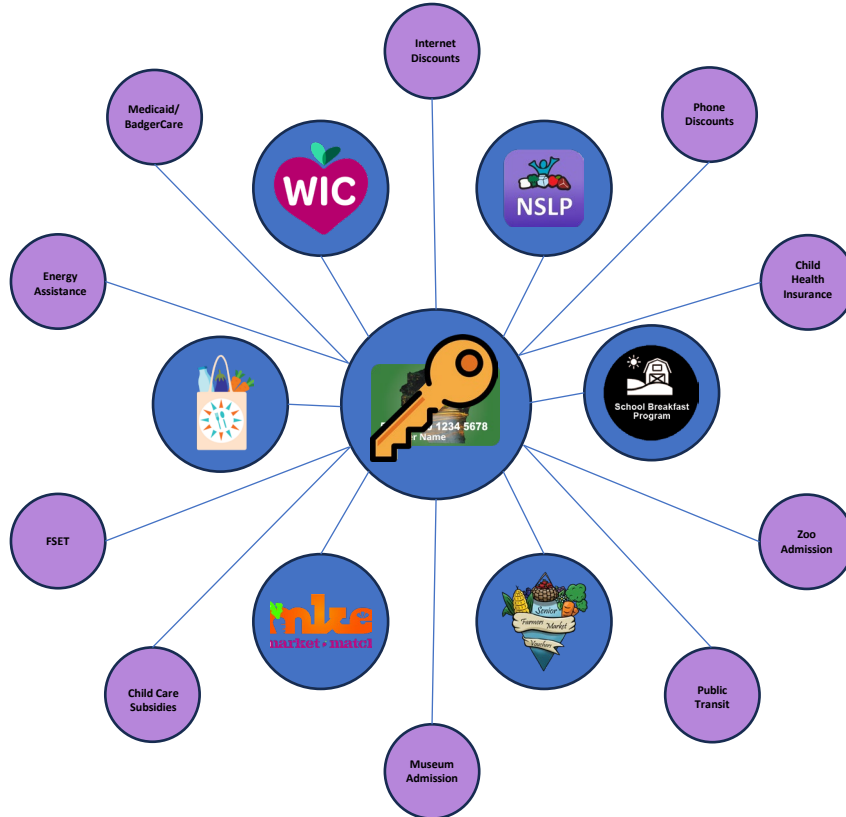
Beyond FoodShare



Beyond FoodShare



Beyond FoodShare



“

*“If it wasn’t for **SNAP**, we probably wouldn’t have had food. We probably would have been very hungry or had to rely on food banks, which are already overcrowded. It has made a huge impact on families like ours.”*

”

DIGNITY • JUSTICE • EQUITY • COMPASSION • STEWARDSHIP

HUNGER TASK FORCE

FREE & LOCAL

“

Allen Castillo

Public Policy & Outreach Manager

(414) 238-6498

Allen.Castillo@HungerTaskForce.org

**Voices
Against
Hunger**



HUNGER TASK FORCE



Scan the QR code and join today!

”

Questions?

DIGNITY • JUSTICE • EQUITY • COMPASSION • STEWARDSHIP

The Agenda for Action



Dr. Reno Wright

Public Policy & Advocacy Director
Hunger Task Force



The Road Ahead

- Policy impacts our work
 - Funding
 - Commodities/Food
 - Pantry Traffic
- Decisions by legislators (Federal and State) directly affect program participants/pantry recipients
- Your work makes you credible; Your voice has power

Advocacy Strategic Plan

- Influence key nutrition program legislation at the local, state and federal levels.
- Maximize participation in SNAP by reducing barriers and enhancing outreach.
- Reduce childhood hunger through increasing participation in child nutrition programs.
- Expand access to nutrition education and improve public health in Wisconsin.
- Strengthen the Hunger Relief Federation statewide.

Advocacy Priorities

- Protect and Expand (where possible) SNAP/FoodShare, WIC, TEFAP, CSFP, Child Nutrition Programs
 - State and Federal Level
- Advocate for state support for SNAP/FoodShare and local food security initiatives
 - Food Security Grant Program through DATCP
 - Tribal Elder Box
- Push long-term investment in state-level funding
 - General Purpose Revenue
 - Upcoming Biennial Budgets
- Expand Access to Federal Nutrition Programs in Wisconsin
 - Summer Non-Congregate

What Can You Do?

- Participate in Quarterly Hunger Relief Federation Advocacy Trainings
- Join Voices Against Hunger
 - Encourage friends, family members and other organizations to JOIN and PARTICIPATE
- Collect Stories and Testimonials
 - Pantry Volunteers, Pantry Participants, Local Businesses and Organizations
- Share Stories
 - Website, Publications, Legislators, Media Outlets
 - Etc.
- Refer pantry participants to other Federal Nutrition Programs
 - Intake Practices

What's Coming?

- State Funding for FoodShare - Pending
- Voices Against Hunger Actions – Monthly
- Hunger Relief Federation District Mapping – December 2025
 - Federal & State
 - Senate & House (Assembly) Committees
 - Strategic HRF Membership Growth
- Story Bank Launches – January 2026
- Summer Meals Non-congregate Expansion – January 2026
- Legislative Agenda Rollout – January 2027
- Lobby Day & Joint Committee on Finance – Listening Sessions – April 2027

How We'll Support You

- Advocacy Toolkits and Training
 - www.hungertaskforce.org
 - Quarterly Advocacy Trainings
 - Upon Request
- Technical Assistance – Upon Request
- Policy Alerts and Updates – Monthly or As Needed
- Support Planning Legislator Visits – As Needed

Call to Action

- Sign up for Voices Against Hunger and Encourage Others to Sign up
- Begin Collecting Participant, Volunteer and Local Business Owner Stories
- Watch Out for Advocacy Training Calls
- Refer Organizations to Join the Hunger Relief Federation
- Be Willing to Do the Following:
 - Letter Writing, Phone Calls, In-person Visits, Public Testimony, Conversations with local schools/businesses, etc.



HUNGER TASK FORCE

FREE & LOCAL

“

Thank you!

”

DIGNITY • JUSTICE • EQUITY • COMPASSION • STEWARDSHIP